

Building Data Summary

Project ID:	*****
Location:	***** Florida
Scope of Work:	Structural and misc. steel
Date:	Year 2025

Item #	Ref. Sheet #	Item Description	Unit	Quantity	Wastage	Quantity w/ Wastage	Unit Material Cost	Total Material Cost	Unit Manhour	Hourly wage (Shop Labor)	Hourly wage (Erect Labor)	Unit Labor Cost	Total Labor Cost	Sub Cost	Total Trade Cost
--------	--------------	------------------	------	----------	---------	------------------------	-----------------------	------------------------	-----------------	--------------------------------	---------------------------------	--------------------	---------------------	----------	------------------

DIVISION.01 GENERAL REQUIREMENTS

1		Supervision and Coordination	LS												\$ 4,000.00
2		Submittals and Shop drawings	LS	34,774			\$ 0.19								\$ 6,607.02
3		Final Cleaning	LS												\$ 1,500.00
4		Mobilization Costs	LS												\$ 5,500.00
5		Temporary Control & Facilities	LS												\$ 2,500.00
6		On-Site Rental Equipment													\$ 4,000.00
7		Lodging - Number of Men x Days	5	10			\$ 150.00								\$ 7,500.00
8		Per Diem - Number of Men x Days	5	10			\$ 50.00								\$ 2,500.00
Subtotal (General Requirements)															\$ 34,107

DIVISION 05- Metal

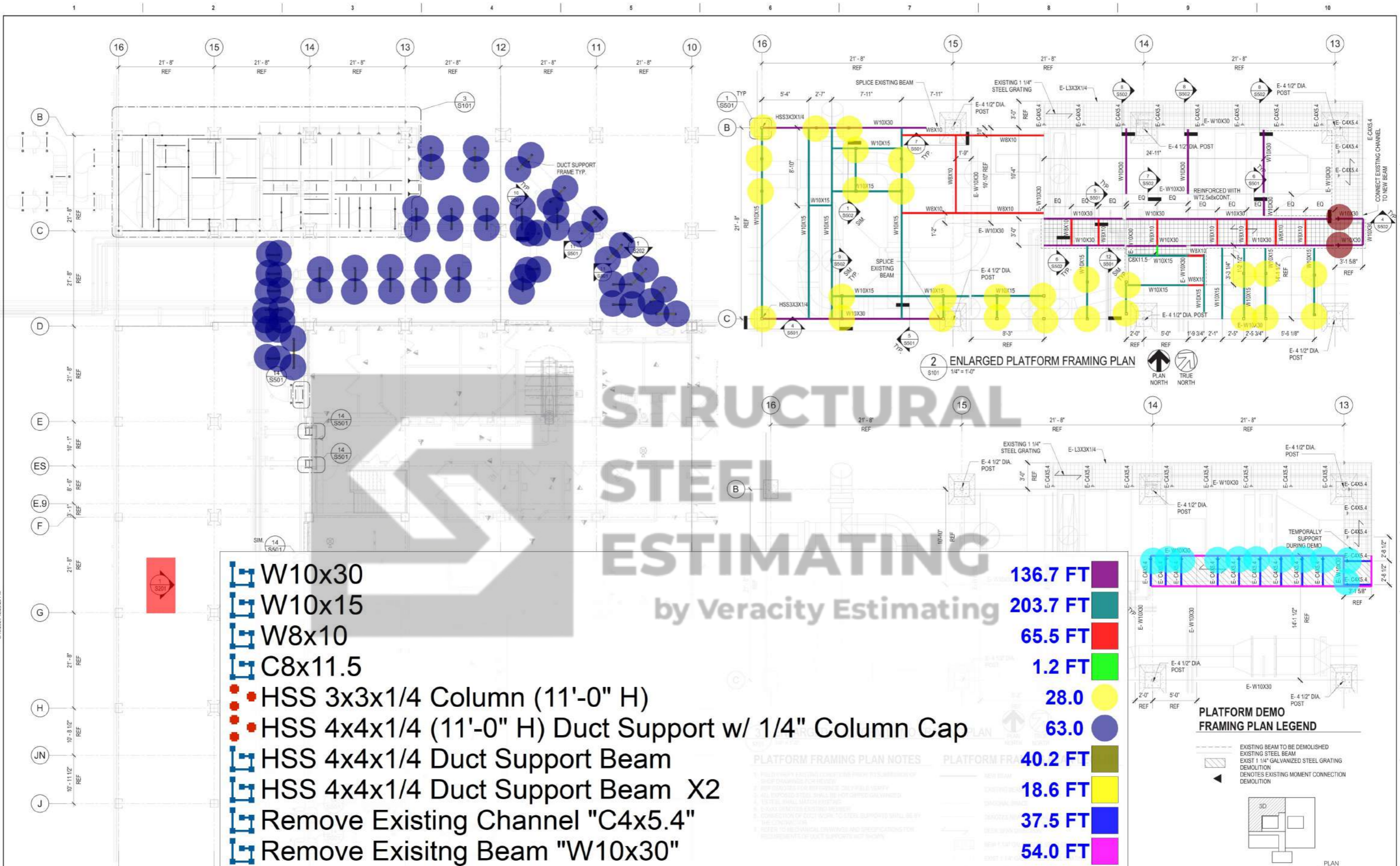
Demo															
9		Remove Existing Channel "C4x5.4"	LF	38	0%	38	\$ -	\$ -	0.016		\$ 65.00	\$ 1.04	\$ 39.52	\$ 39.52	
10		Remove Existing Beam "W10x30"	LF	54	0%	54	\$ -	\$ -	0.018		\$ 65.00	\$ 1.17	\$ 63.18	\$ 63.18	
11		Remove Existing Moment Connection	EA	11	0%	11	\$ -	\$ -	0.350		\$ 65.00	\$ 22.75	\$ 250.25	\$ 250.25	
Steel Framing															
Beam															
W Shape															
12		W10x30 - 137 LF	Lbs.	4110	5%	4316	\$ 2.10	\$ 9,062.55	0.020	\$ 65.00		\$ 1.30	\$ 5,610.15	\$ 14,672.70	
13		W10x15 - 204 LF	Lbs.	3060	5%	3213	\$ 2.10	\$ 6,747.30	0.020	\$ 65.00		\$ 1.30	\$ 4,176.90	\$ 10,924.20	
14		W8x10 - 66 LF	Lbs.	660	5%	693	\$ 2.10	\$ 1,455.30	0.020	\$ 65.00		\$ 1.30	\$ 900.90	\$ 2,356.20	
Hollow Structure Section															
15		HSS 8x4x1/4 LSV - 17 LF	Lbs.	231	5%	243	\$ 2.10	\$ 509.80	0.020	\$ 65.00		\$ 1.30	\$ 315.59	\$ 825.38	
16		HSS 8x8x3/8 - 20 LF	Lbs.	752	5%	790	\$ 2.10	\$ 1,658.16	0.020	\$ 65.00		\$ 1.30	\$ 1,026.48	\$ 2,684.64	
17		HSS 3x3x1/4 - 106 LF	Lbs.	931	5%	977	\$ 2.10	\$ 2,052.15	0.020	\$ 65.00		\$ 1.30	\$ 1,270.38	\$ 3,322.53	
18		HSS 2x2x1/4 - 54 LF	Lbs.	291	5%	305	\$ 2.10	\$ 640.60	0.020	\$ 65.00		\$ 1.30	\$ 396.56	\$ 1,037.16	
19		HSS 6x2x1/4 LSH - 7 LF	Lbs.	85	5%	90	\$ 2.10	\$ 188.31	0.020	\$ 65.00		\$ 1.30	\$ 116.57	\$ 304.88	
Duct Support Hollow Structure Section															
20		HSS 4x4x1/4 Duct Support - 120 LF	Lbs.	1464	5%	1537	\$ 2.10	\$ 3,228.12	0.020	\$ 65.00		\$ 1.30	\$ 1,998.36	\$ 5,226.48	
Connection															
21		Moment Connection	EA	2	0%	2	\$ 84.00	\$ 168.00	0.520		\$ 65.00	\$ 33.80	\$ 67.60	\$ 235.60	
Column															
22		HSS 3x3x1/4 (11'-0" H)(28 EA)	Lbs.	2704	5%	2839	\$ 2.10	\$ 5,962.85	0.020	\$ 65.00		\$ 1.30	\$ 3,691.29	\$ 9,654.14	
23		HSS 6x4x1/4 (9'-6"H)(2 EA)	Lbs.	296	5%	311	\$ 2.10	\$ 653.56	0.020	\$ 65.00		\$ 1.30	\$ 404.59	\$ 1,058.15	
Duct Support Hollow Structure Section															
24		HSS 4x4x1/4 (11'-0" H)(63 EA) w/ 1/4" Column Cap	Lbs.	8455	5%	8877	\$ 2.10	\$ 18,642.39	0.020	\$ 65.00		\$ 1.30	\$ 11,540.53	\$ 30,182.92	
Angle															
25		L4x4x1/4 - 10 EA w/ 1/2" Dia x 2-3/4 Embed HY200 Anchor	Lbs.	66	5%	69	\$ 1.73	\$ 119.53	0.018		\$ 65.00	\$ 1.17	\$ 80.84	\$ 200.36	
26		L2x2x1/4 - 106 LF w/ 3/8" Hiti HDI-P Anchor @ 6" O.C	Lbs.	340	5%	357	\$ 1.73	\$ 618.08	0.018		\$ 65.00	\$ 1.17	\$ 418.01	\$ 1,036.09	
27		L3x3x1/4 - 23 LF w/ 3/8" Hilti HDI-P Anchor @ 6" O.C	Lbs.	112	5%	118	\$ 1.73	\$ 204.30	0.018		\$ 65.00	\$ 1.17	\$ 138.17	\$ 342.47	
Duct Support Angle															
28		L2x2x1/4 - 192 LF	Lbs.	616	5%	647	\$ 1.73	\$ 1,119.55	0.018		\$ 65.00	\$ 1.17	\$ 757.15	\$ 1,876.69	
Channel															
29		C8x11.5 - 2 LF	Lbs.	23	5%	24	\$ 1.73	\$ 41.78	0.018		\$ 65.00	\$ 1.17	\$ 28.26	\$ 70.04	

Building Data Summary

Project ID:	*****
Location:	***** Florida
Scope of Work:	Structural and misc. steel
Date:	Year 2025

Item #	Ref. Sheet #	Item Description	Unit	Quantity	Wastage	Quantity w/ Wastage	Unit Material Cost	Total Material Cost	Unit Manhour	Hourly wage (Shop Labor)	Hourly wage (Erect Labor)	Unit Labor Cost	Total Labor Cost	Sub Cost	Total Trade Cost
		Steel Plate													
		Base Plate													
30		12x12x3/4 - 28 EA w/ (4) 13/16" Dia Hole For 1/2" Dia x 2-3/4" Embed	Lbs.	857	5%	900	\$ 1.73	\$ 1,557.39	0.022		\$ 65.00	\$ 1.43	\$ 1,287.33	\$ 2,844.72	
		Connection Plate													
31		14x14x3/4 - 2 EA w/ (8) 13/16" Dia Hole For 1/2" Dia x 2-3/4" Embed Anchor	Lbs.	83	5%	88	\$ 1.73	\$ 151.42	0.022		\$ 65.00	\$ 1.43	\$ 125.17	\$ 276.59	
32		2x2x3/16 - 10 EA (Assumed Size Except Thickness)	Lbs.	2.1	5%	2	\$ 1.73	\$ 3.81	0.022		\$ 65.00	\$ 1.43	\$ 3.15	\$ 6.97	
		Unistrut Framing													
		Bracing													
33		P1000 Diagonal Interior Side Unistrut Bracing - 42 LF	Lbs.	79	5%	83	\$ 1.82	\$ 151.70	0.022		\$ 65.00	\$ 1.43	\$ 119.19	\$ 270.88	
34		P1000 Exterior Side Bracing 14" Long - 12 EA	Lbs.	27	5%	28	\$ 1.82	\$ 50.71	0.022		\$ 65.00	\$ 1.43	\$ 39.84	\$ 90.55	
		Unistrut Support Beam													
35		P1001 Unistrut Support Beam - 502 LF	Lbs.	1898	5%	1992	\$ 1.82	\$ 3,626.24	0.022		\$ 65.00	\$ 1.43	\$ 2,849.19	\$ 6,475.42	
		Unistrut Fitting													
36		P2347 Unistrut Fitting - 56 EA	Lbs.	108	5%	113	\$ 1.82	\$ 206.54	0.022		\$ 65.00	\$ 1.43	\$ 162.28	\$ 368.82	
37		P3810 Unistrut Fitting - 36 EA	Lbs.	22	5%	23	\$ 1.82	\$ 42.04	0.022		\$ 65.00	\$ 1.43	\$ 33.03	\$ 75.08	
		Holding Frame													
38		P100H3 - (56 EA)(14" H)	Lbs.	124	5%	130	\$ 1.73	\$ 224.94	0.022		\$ 65.00	\$ 1.43	\$ 185.93	\$ 410.88	
		Unistrut Bracket													
39		P2345 Wing Bracket - 56 EA	Lbs.	110	5%	115	\$ 1.82	\$ 209.75	0.022		\$ 65.00	\$ 1.43	\$ 164.80	\$ 374.56	
40		P2344 Wing Bracket - 86 LF	Lbs.	157	5%	164	\$ 1.82	\$ 299.34	0.022		\$ 65.00	\$ 1.43	\$ 235.19	\$ 534.53	
41		P2492 Bracket - 36 EA	Lbs.	34	5%	36	\$ 1.82	\$ 64.97	0.022		\$ 65.00	\$ 1.43	\$ 51.05	\$ 116.03	
		Connection Plate													
42		P2492 1/2x2x1/4 Connect Plate - 108 EA w/ KWIK Bolt T22 Anchor	EA	108	5%	113	\$ 88.50	\$ 10,035.90	0.550		\$ 65.00	\$ 35.75	\$ 4,054.05	\$ 14,089.95	
				Per #		34,774	\$ 5.18	\$ 69,697					\$ 42,601		\$ 112,299
				Per Ton		17.39	\$ 10,357.16								
													PROJECTED COST	\$ 146,406	
													INSURANCE	3%	\$ 4,392.17
													CONTINGENCY	5%	\$ 7,320.28
													OVERHEAD AND PROFIT	15%	\$ 21,960.84
													TAX	0.00%	\$ -
													SUGGESTED BID	\$ 180,079	

Note:
 1. Please verify the equipment's and their prices with owner.
 2. Online sources are used for pricing.
 3. Prices can vary depending upon field conditions.

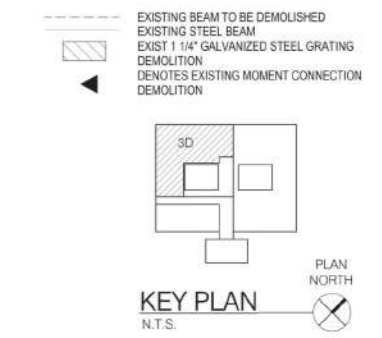


	W10x30	136.7 FT
	W10x15	203.7 FT
	W8x10	65.5 FT
	C8x11.5	1.2 FT
	HSS 3x3x1/4 Column (11'-0" H)	28.0
	HSS 4x4x1/4 (11'-0" H) Duct Support w/ 1/4" Column Cap	63.0
	HSS 4x4x1/4 Duct Support Beam	40.2 FT
	HSS 4x4x1/4 Duct Support Beam X2	18.6 FT
	Remove Existing Channel "C4x5.4"	37.5 FT
	Remove Existing Beam "W10x30"	54.0 FT
	Remove Existing Moment Connection	11.0
	Moment Connection	2.0

1 SECOND FLOOR FRAMING PLAN
S101 1/8" = 1'-0"

2 ENLARGED PLATFORM FRAMING PLAN
S101 1/4" = 1'-0"

PLATFORM DEMO FRAMING PLAN LEGEND



PLATFORM FRAMING PLAN NOTES

- FIELD DIMENSIONS INDICATED UNLESS OTHERWISE SPECIFIED.
- ALL DIMENSIONS SHALL BE TO CENTER UNLESS OTHERWISE SPECIFIED.
- ALL DIMENSIONS SHALL BE TO CENTER UNLESS OTHERWISE SPECIFIED.
- ALL DIMENSIONS SHALL BE TO CENTER UNLESS OTHERWISE SPECIFIED.
- ALL DIMENSIONS SHALL BE TO CENTER UNLESS OTHERWISE SPECIFIED.
- ALL DIMENSIONS SHALL BE TO CENTER UNLESS OTHERWISE SPECIFIED.
- ALL DIMENSIONS SHALL BE TO CENTER UNLESS OTHERWISE SPECIFIED.
- ALL DIMENSIONS SHALL BE TO CENTER UNLESS OTHERWISE SPECIFIED.
- ALL DIMENSIONS SHALL BE TO CENTER UNLESS OTHERWISE SPECIFIED.
- ALL DIMENSIONS SHALL BE TO CENTER UNLESS OTHERWISE SPECIFIED.

Revisions:	Date:



AKEA Design, Inc.
3603 NW 98th Street, Suite B
Gainesville, FL 32606
Phone: (352) 474-6124
Fax: (352) 553-4437
COA: FL #29758
AKEA Design Project #AD174-19

This item has been electronically signed and sealed by the individual named at right. Printed copies of this document are not considered signed and sealed and the signature must be verified on any electronic copies.



Office of Construction and Facilities Management
U.S. Department of Veterans Affairs

Project Title: RENOVATE 3D FOR CARDIOLOGY SERVICE
Project Number: 573-CSI-122
Building Number: 1
Drawing Number: S101
3 OF 114

Issue Date: SEPTEMBER 12, 2024
Checked: SLW
Drawn: DCA



FLOOR FRAMING PLAN NOTES

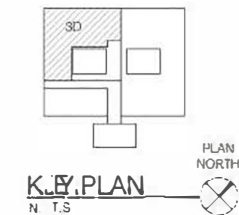
1. FIELD VERIFY EXISTING CONDITIONS PRIOR TO SUBMISSION OF SHOP DRAWINGS FOR REVIEW
2. REF DENOTES FOR REFERENCE ONLY FIELD VERIFY
3. COORDINATE UNISTRUT LAYOUT WITH MECHANICAL DRAWINGS AND EQUIPMENT MANUFACTURER AND BEOM SUPPORT LOCATIONS PRIOR TO SUBMISSION OF SHOP DRAWINGS FOR REVIEW.
4. BOTTOM OF UNISTRUT = 8'-10 5/16" FROM FINISHED FLOOR. COORDINATE WITH EQUIPMENT MANUFACTURER PRIOR TO SUBMISSION OF SHOP DRAWINGS FOR REVIEW.
5. DO NOT DAMAGE EXISTING SLAB REINFORCING DURING INSTALLATION OF NEW CONDUIT OR PIPING. INNO EVEN SHALL NEW PENETRATION PENETRATE COLUMN DROP SPANLS. CONTRACTOR FIELD LOCATE EXISTING REINFORCING VIA NON-DESTRUCTIVE MEANS PRIOR TO SUBMISSION OF SHOP DRAWINGS FOR REVIEW

FLOOR FRAMING PLAN LEGEND

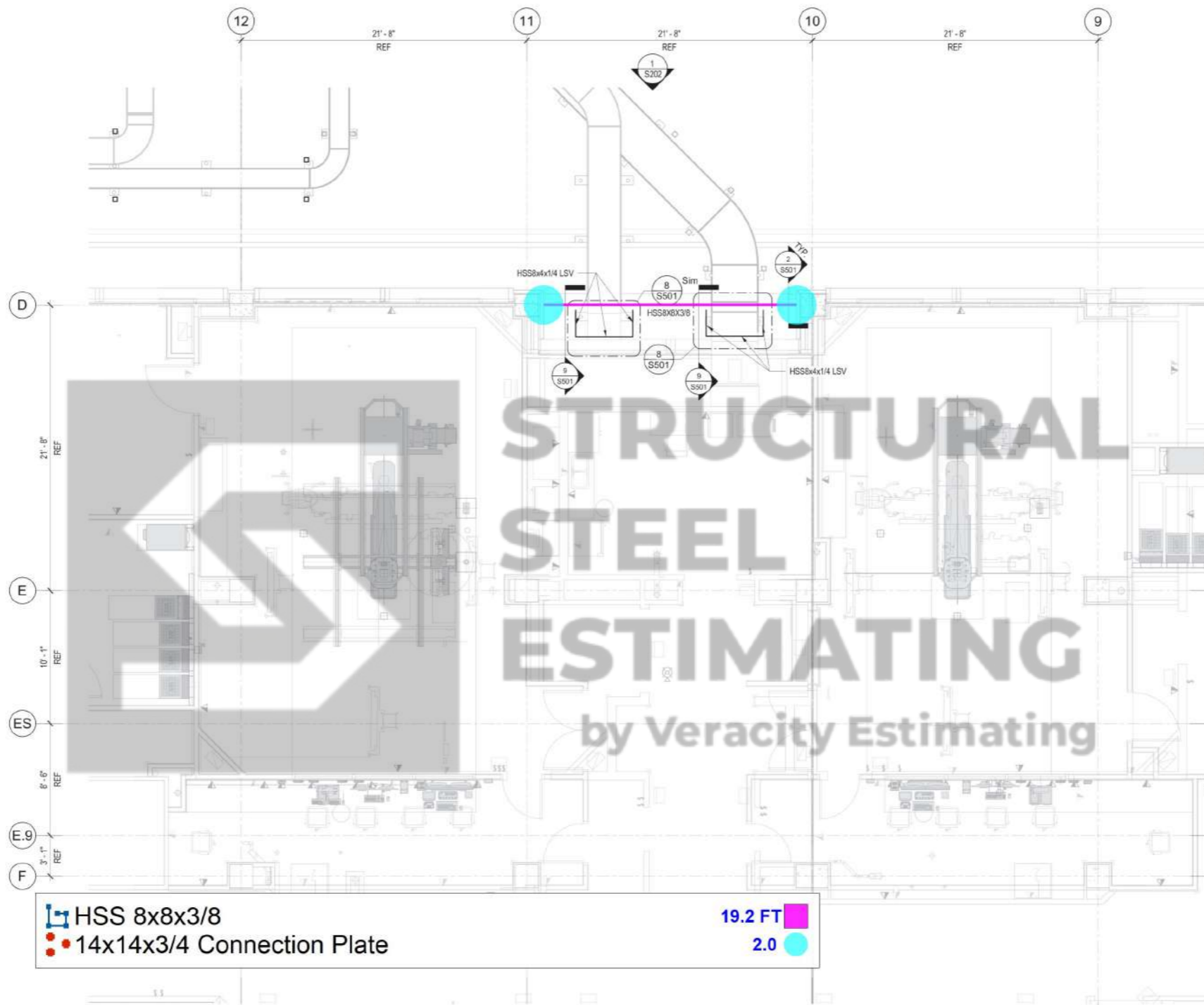
- UNISTRUT BEAM
- DENOTES P100H3 UNISTRUT HANGER
- DIAGONAL BRACE
- EXTERIOR DIAGONAL BRACE

<ul style="list-style-type: none"> P1001 Unistrut Support Beam + P1001 Double P2345 Angle Connect Support X2 + P100H3 + P2347 P2344 Cant P3810 (1/2x2x1/4) Connect Plate X2 w/ KWIK Bolt TZ2 Anchor X1 P1000 Diagonal Bracing P1000 Exterior Side Bracing 14" Long 	<ul style="list-style-type: none"> 250.4 FT 56.0 88.6 FT 36.0 41.3 FT 12.0
--	--

1 FOURTH FLOOR FRAMING PLAN
S103 14' x 14'



Revisions: Date:	CONSULTANT 	ARCHITECT/ENGINEER OF RECORD AKEA Design, Inc. 3603 NW 98th Street, Suite B Gainesville, FL 32606 Phone: (352) 474-6124 Fax: (352) 553-4437 COA: FL #29758 AKEA Design Project #AD174-19	ENGINEER-OF-RECORD FL. P.E. NO. SCOTT L. WEILAND, PC 51146 	Office of Construction and Facilities Management VA U.S. Department of Veterans Affairs	Drawing Title FOURTH FLOOR FRAMING PLAN Approved:	Phase FINAL DESIGN SUBMITTAL APPROVED FOR CONSTRUCTION	Project Title RENOVATE 3D FOR CARDIOLOGY SERVICE	Project Number 573-CS1-122 Building Number 1 Drawing Number S103 5 OF 114
	Issue Date SEPTEMBER 12, 2024	Checked SLW	Drawn DCA					

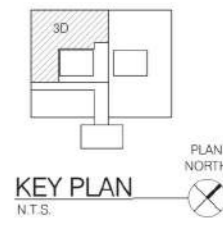


FLOOR FRAMING PLAN NOTES

1. FIELD VERIFY EXISTING CONDITIONS PRIOR TO SUBMISSION OF SHOP DRAWINGS FOR REVIEW
2. REF DENOTES FOR REFERENCE ONLY FIELD VERIFY
3. ALL EXPOSED STEEL SHALL BE HOT DIPPED GALVANIZED
4. REMOVE ALL EXISTING WALL PANEL AS REQUIRED TO INSTALL NEW BEAM CONNECTIONS



FLOOR FRAMING PLAN LEGEND

— BEAM



1 THIRD FLOOR FRAMING PLAN
S102 1/4" = 1'-0"

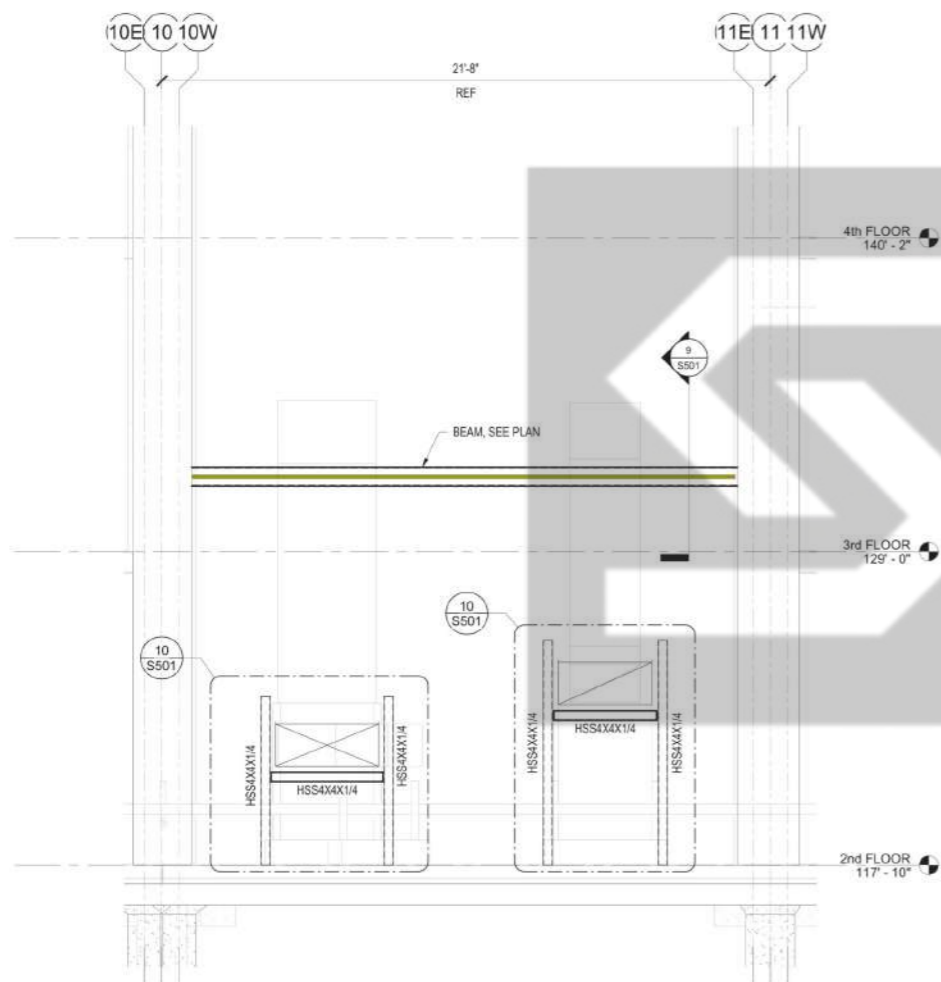
PLAN NORTH
TRUE NORTH

Revisions: Date:	CONSULTANT  INNOVATIVE ENGINEERING INCORPORATED 2300 Jackson Road #400, 400, 400, 400 33500 S.W. 15th Ave. Fort Lauderdale, FL 33325 754.271.2222 www.ine.com	ARCHITECT/ENGINEER OF RECORD AKEA Design, Inc. 3603 NW 98th Street, Suite B Gainesville, FL 32606 Phone: (352) 474-6124 Fax: (352) 553-4437 COA: FL #29758 AKEA Design Project #AD174-19 <small>This item has been electronically signed and sealed by the individual named at right. Printed copies of this document are not considered signed and sealed and the signature must be verified on any electronic copies.</small>	ENGINEER - OF-RECORD FL. P.E. NO. 51142 SCOTT L. WELAND, PE 51146 	Office of Construction and Facilities Management VA U.S. Department of Veterans Affairs	Drawing Title THIRD FLOOR FRAMING PLAN Approved:	Phase FINAL DESIGN SUBMITTAL APPROVED FOR CONSTRUCTION	Project Title RENOVATE 3D FOR CARDIOLOGY SERVICE	Project Number 573-CSI-122 Building Number 1 Drawing Number S102 4 OF 114
	Issue Date SEPTEMBER 12, 2024	Checked SLW	Drawn DCA					

8/13/2024 12:20:29 PM

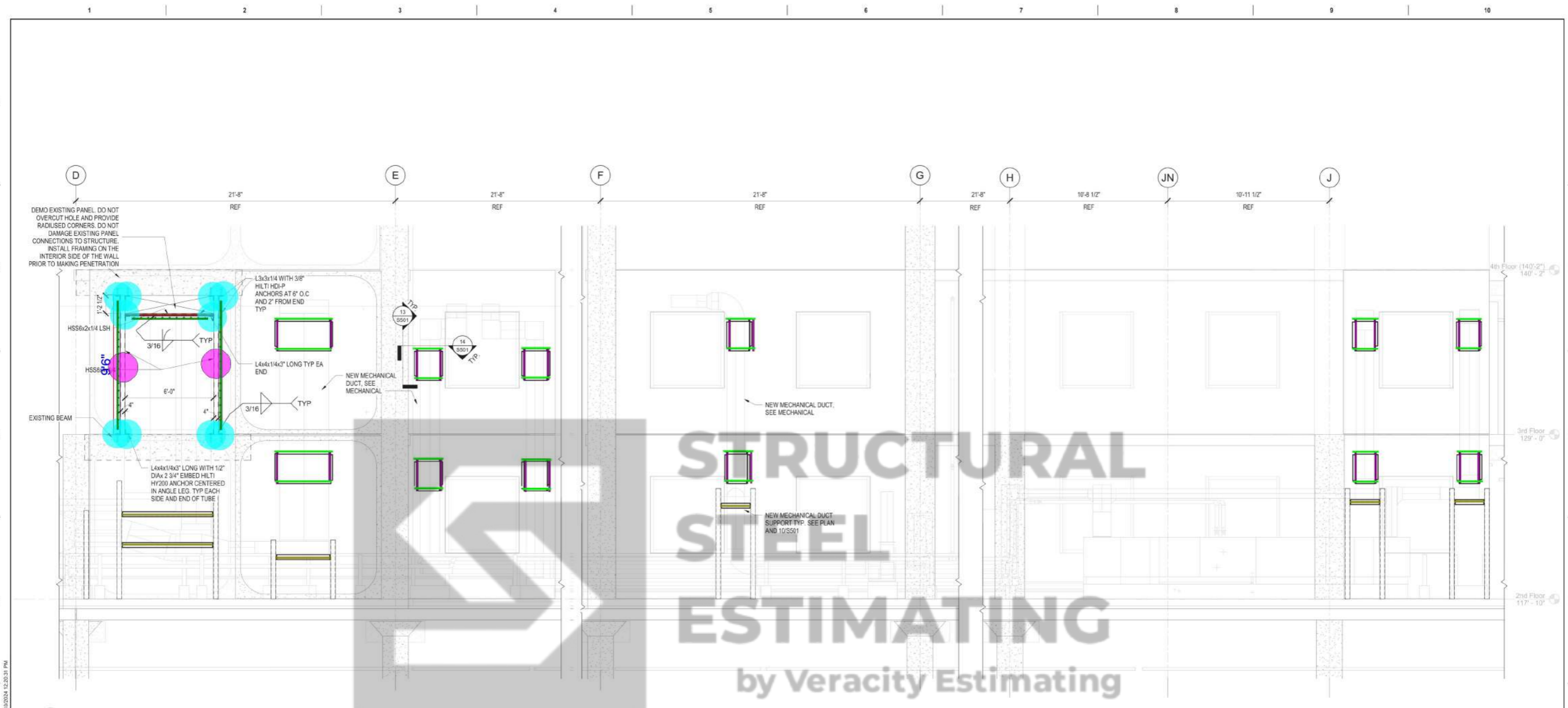
HSS 4x4x1/4 Duct Support Beam

19.4 FT



1 PARTIAL NORTH ELEVATION
S202 3/8" = 1'-0"

Revisions:	CONSULTANT	ARCHITECT/ENGINEER OF RECORD	ENGINEER - OF-RECORD FL. P.E. NO. 51142 SCOTT L. WELAND, PE 51146	Office of Construction and Facilities Management VA U.S. Department of Veterans Affairs	Drawing Title	Phase	Project Title	Project Number
	Date:	 INNOVATIVE ENGINEERING INCORPORATED 3390 Tatum Road Suite 400, Ft. Lauderdale, FL 33309 Phone: (352) 474-6124 Fax: (352) 553-4437 COA: FL #29758 AKEA Design Project #AD174-19	AKEA Design, Inc. 3603 NW 98th Street, Suite B Gainesville, FL 32606 Phone: (352) 474-6124 Fax: (352) 553-4437 COA: FL #29758 AKEA Design Project #AD174-19 This item has been electronically signed and sealed by the individual named at right. Printed copies of this document are not considered signed and sealed and the signature must be verified on any electronic copies.			ELEVATIONS	FINAL DESIGN SUBMITTAL APPROVED FOR CONSTRUCTION	RENOVATE 3D FOR CARDIOLOGY SERVICE
					Approved:		Location	Building Number
							GAINESVILLE, FLORIDA	1
							Issue Date	Drawing Number
							SEPTEMBER 12, 2024	S202
							Checked	7 OF 114
							SLW	
							Drawn	
							DCA	



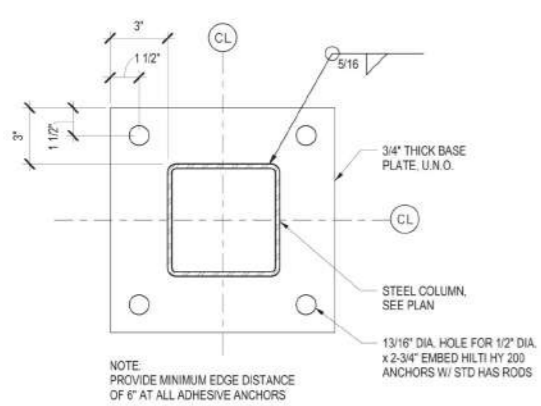
1 PARTIAL EAST WALL ELEVATION
S201 3/8" = 1'-0"

NOTES

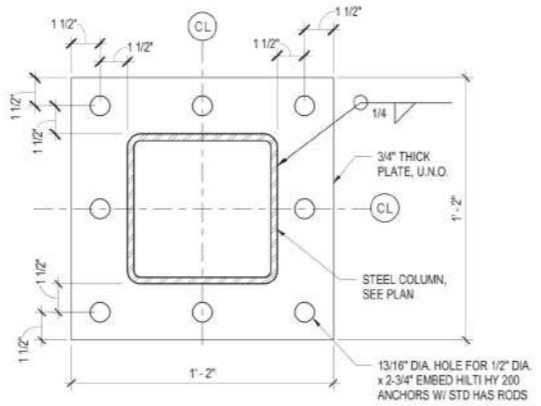
1. COORDINATE DUCT SUPPORT LOCATIONS WITH EXISTING CONDITIONS AND EXACT DUCT LAYOUT PRIOR TO SUBMISSION OF SHOP DRAWINGS FOR REVIEW.

	HSS 3x3x1/4 + L2x2x1/4 w/ 3/8" Hiti HDI-P Anchor X2	52.2 FT
	HSS 2x2x1/4 BEAM	53.6 FT
	HSS 6x4x1/4 (9'-6"H)	2.0
	L4x4x1/4 Angle w/ 1/2" Dia x 2-3/4 Embed HY200 Anchor	10.0
	HSS 6x2x1/4 LSH Beam	6.0 FT
	L3x3x1/4 w/ 3/8" Hilti HDI-P Anchor @ 6" O.C	22.7 FT
	HSS 4x4x1/4 Duct Support Beam	22.3 FT

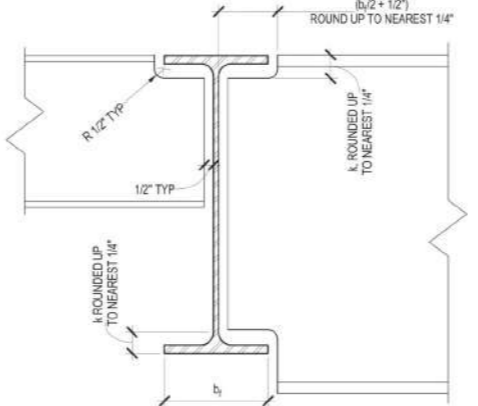
Revisions: Date:	CONSULTANT INNOVATIVE ENGINEERING INCORPORATED 3390 Jackson Road Suite 400, Jacksonville, FL 32216 Phone: (904) 731-1111 Fax: (904) 731-1112 www.innovative-eng.com	ARCHITECT/ENGINEER OF RECORD AKEA Design, Inc. 3603 NW 98th Street, Suite B Gainesville, FL 32606 Phone: (352) 474-6124 Fax: (352) 553-4437 COA: FL #29758 AKEA Design Project #AD174-19	ENGINEER - OF-RECORD FL. P.E. NO. SCOTT L. WELAND, PE 51146 This item has been electronically signed and sealed by the individual named at right. Printed copies of this document are not considered signed and sealed and the signature must be verified on any electronic copies.	Office of Construction and Facilities Management VA U.S. Department of Veterans Affairs	Drawing Title ELEVATIONS	Phase FINAL DESIGN SUBMITTAL APPROVED FOR CONSTRUCTION	Project Title RENOVATE 3D FOR CARDIOLOGY SERVICE	Project Number 573-CSI-122
					Approved:	Location GAINESVILLE, FLORIDA	Building Number 1	
Issue Date SEPTEMBER 12, 2024		Checked SLW	Drawn DCA	Drawing Number S201		6 OF 114		



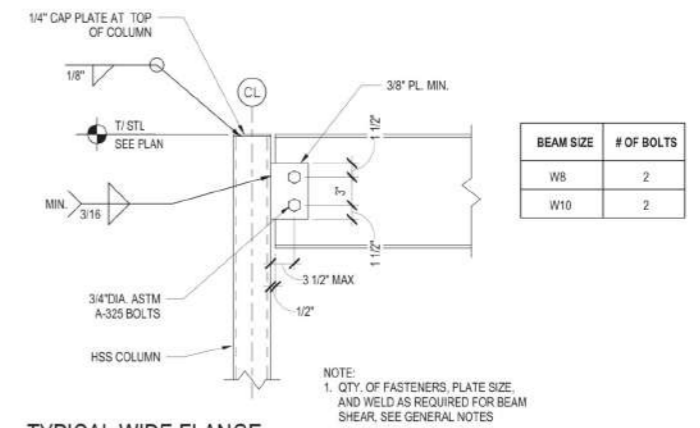
1 TYPICAL BASE PLATE DETAIL
S501 3" = 1'-0"



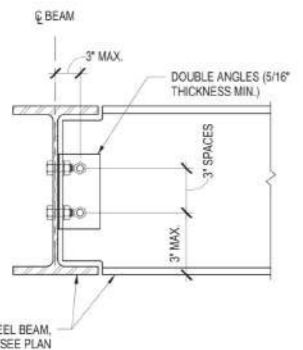
2 TYPICAL END PLATE DETAIL
S501 3" = 1'-0"



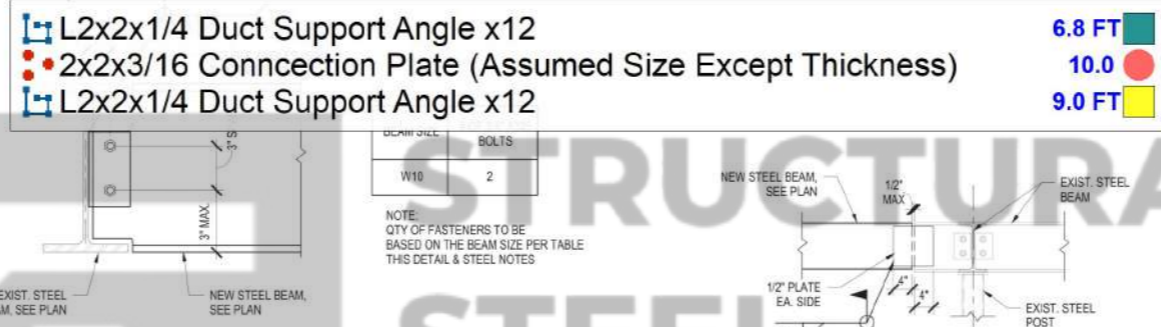
3 TYPICAL COPE DETAIL
S501 3" = 1'-0"



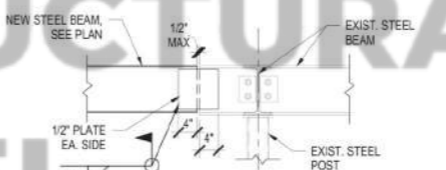
4 TYPICAL WIDE FLANGE BEAM TO HSS COLUMN CONNECTION
S501 1 1/2" = 1'-0"



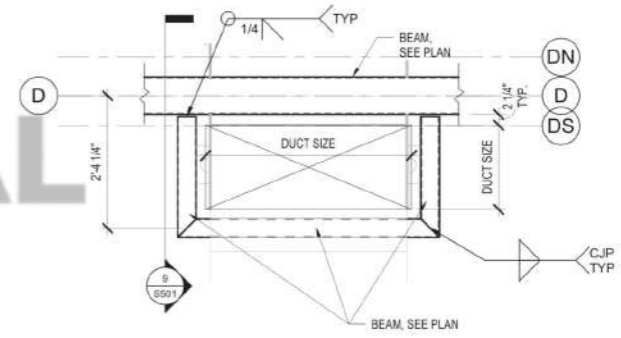
5 TYPICAL BEAM TO BEAM CONNECTION DETAIL (ALL BOLTED)
S501 NTS



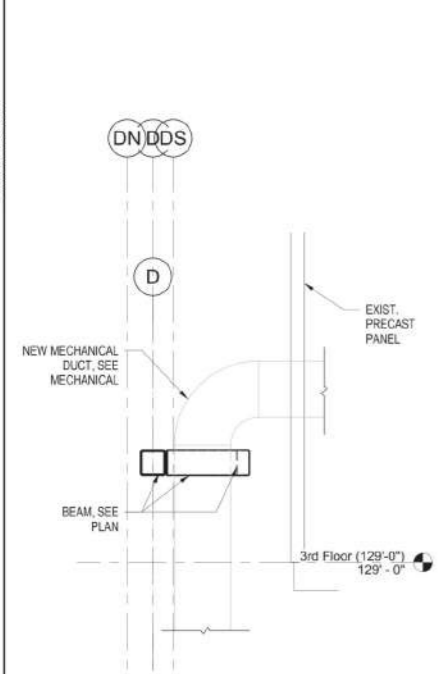
6 TYPICAL BEAM TO EXISTING BEAM CONNECTION DETAIL
S501 NTS



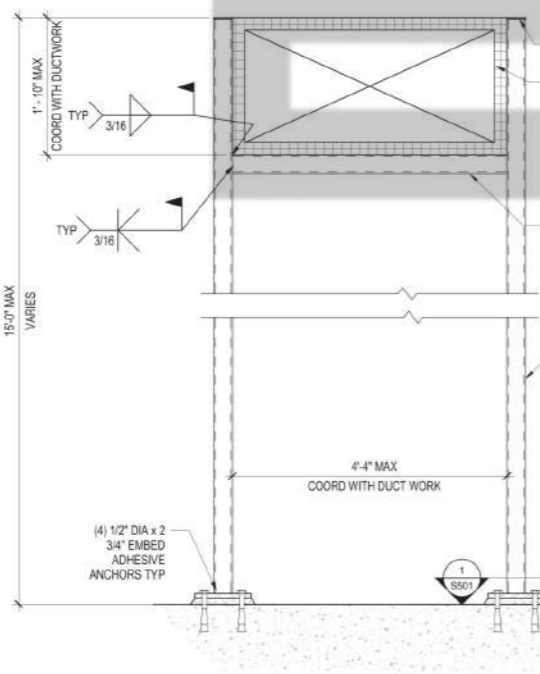
7 BEAM TO BEAM CONNECTION
S501 3/4" = 1'-0"



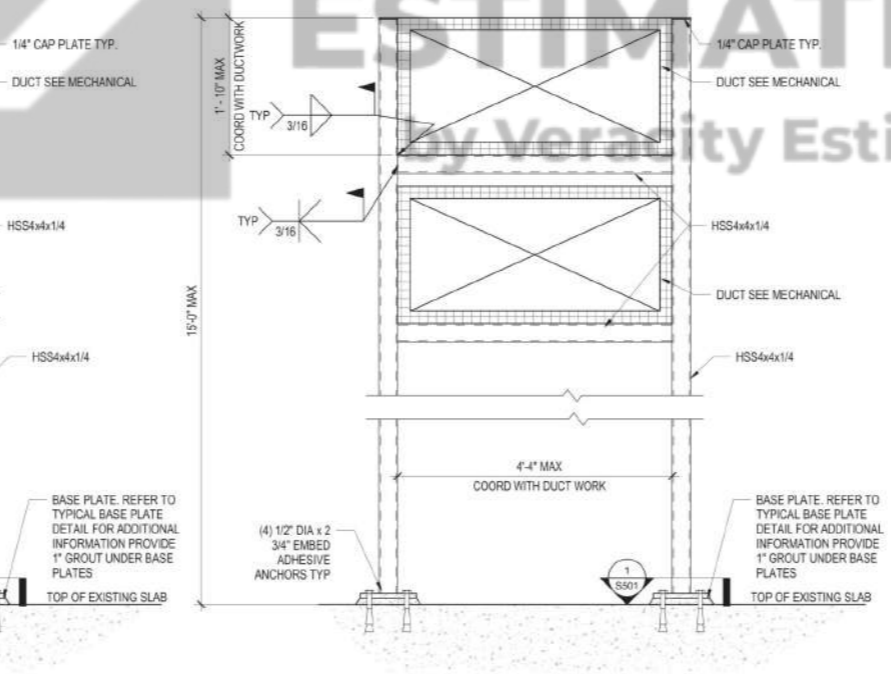
8 ENLARGED PLAN AT DUCT SUPPORT
S501 3/4" = 1'-0"



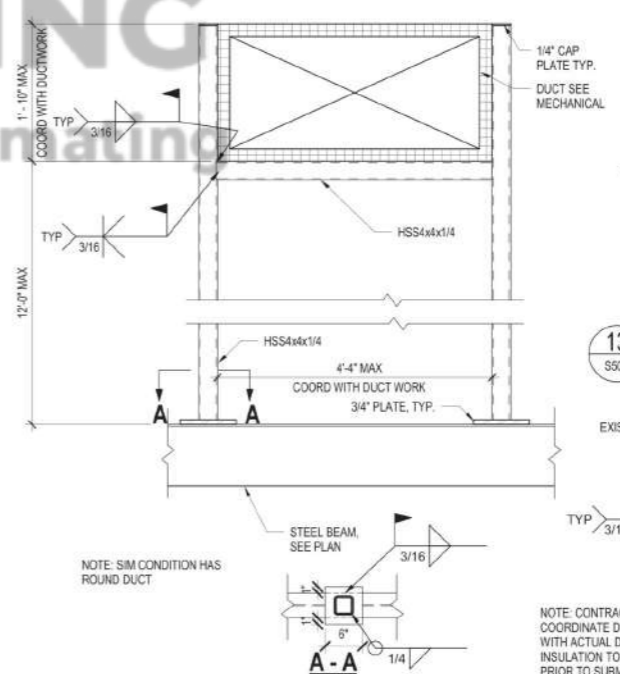
9 SECTION AT DUCT SUPPORT
S501 1/2" = 1'-0"



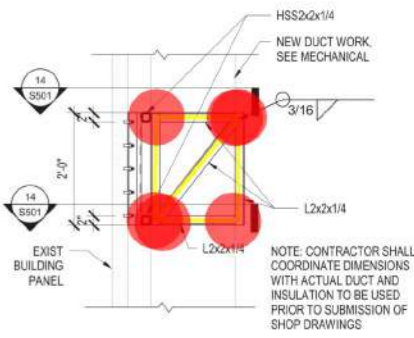
10 SECTION AT DUCT SUPPORT
S501 1" = 1'-0"



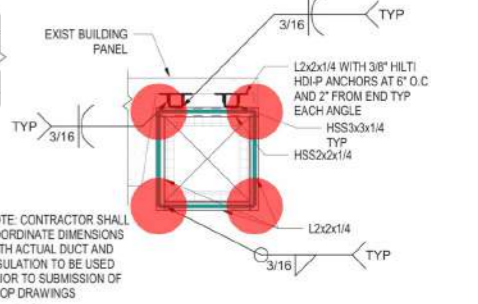
11 SECTION AT DUCT SUPPORT
S501 1" = 1'-0"



12 SECTION AT DUCT SUPPORT
S501 1" = 1'-0"



13 DUCT SUPPORT FRAMING SECTION
S501 3/4" = 1'-0"



14 ENLARGED PLAN AT DUCT SUPPORT
S501 3/4" = 1'-0"

Revisions:	Date:

CONSULTANT

INNOVATIVE ENGINEERING INCORPORATED
3800 Jackson Road
Gainesville, FL 32606
Phone: (352) 553-4437
COA: FL #29758
www.ine.com

ARCHITECT/ENGINEER OF RECORD

AKEA Design, Inc.
3603 NW 98th Street, Suite B
Gainesville, FL 32606
Phone: (352) 474-6124
Fax: (352) 553-4437
COA: FL #29758
AKEA Design Project #AD174-19

This item has been electronically signed and sealed by the individual named at right. Printed copies of this document are not considered signed and sealed and the signature must be verified on any electronic copies.

ENGINEER OF RECORD FL. P.E. NO. SCOTT L. WELAND, PE 51146

Office of Construction and Facilities Management

VA U.S. Department of Veterans Affairs

Drawing Title
STEEL DETAILS

Approved:

Phase
FINAL DESIGN SUBMITTAL
APPROVED FOR CONSTRUCTION

Project Title
RENOVATE 3D FOR
CARDIOLOGY SERVICE

Location
GAINESVILLE, FLORIDA

Issue Date
SEPTEMBER 12, 2024

Checked
SLM

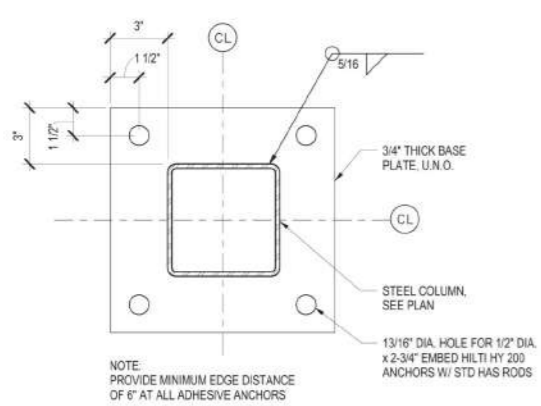
Drawn
DCA

Project Number
573-CSI-122

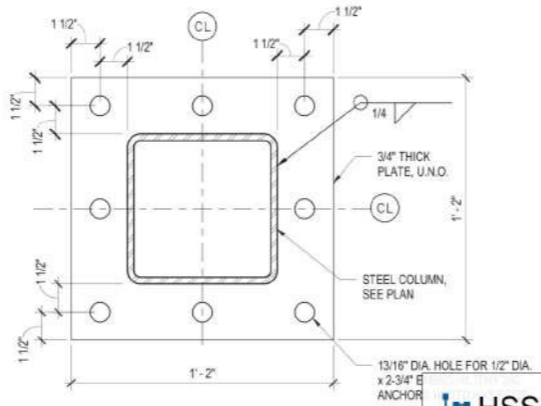
Building Number
1

Drawing Number
S501

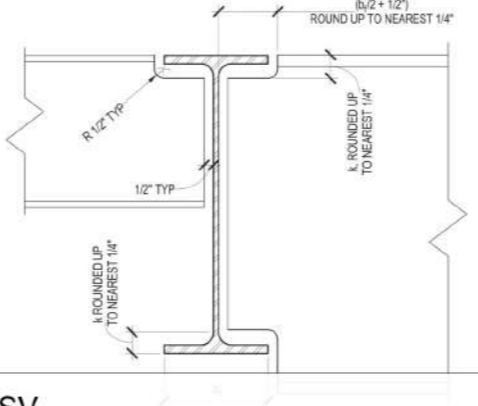
8 OF 114



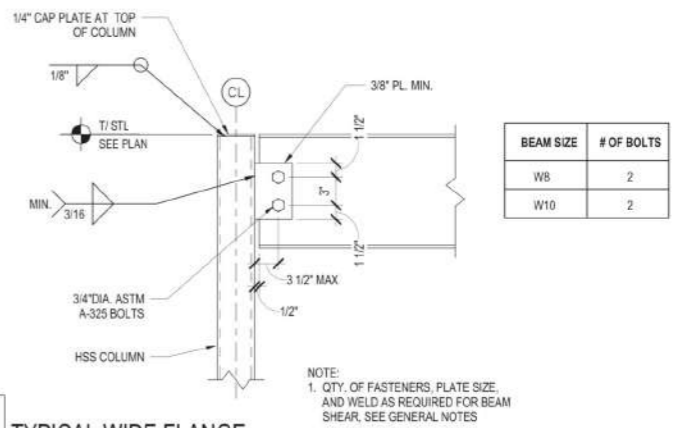
1 TYPICAL BASE PLATE DETAIL
S501 3" = 1'-0"



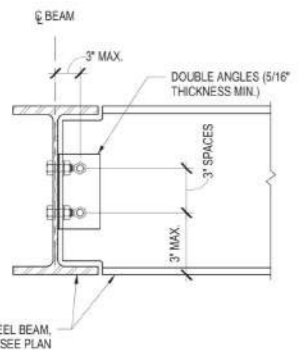
2 TYPICAL END PLATE DETAIL
S501 3" = 1'-0"



3 TYPICAL COPE DETAIL
S501 3" = 1'-0"



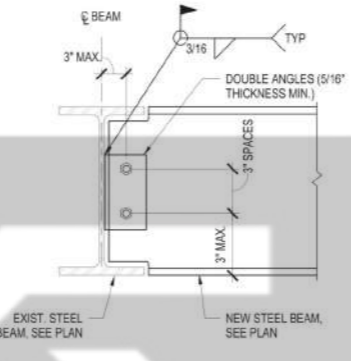
4 TYPICAL WIDE FLANGE BEAM TO HSS COLUMN CONNECTION
S501 1 1/2" = 1'-0"



5 TYPICAL BEAM TO BEAM CONNECTION DETAIL (ALL BOLTED)
S501 NTS

BEAM SIZE	# OF 3/4" A325 BOLTS
W10	2

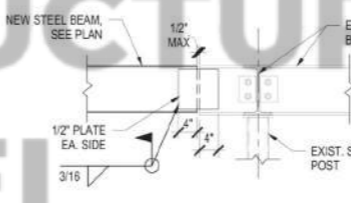
NOTE: QTY OF FASTENERS TO BE BASED ON THE BEAM SIZE PER TABLE THIS DETAIL & STEEL NOTES



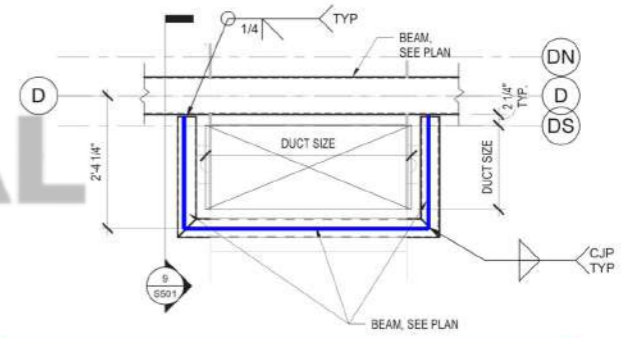
6 TYPICAL BEAM TO EXISTING BEAM CONNECTION DETAIL
S501 NTS

BEAM SIZE	# OF 3/4" A325 BOLTS
W10	2

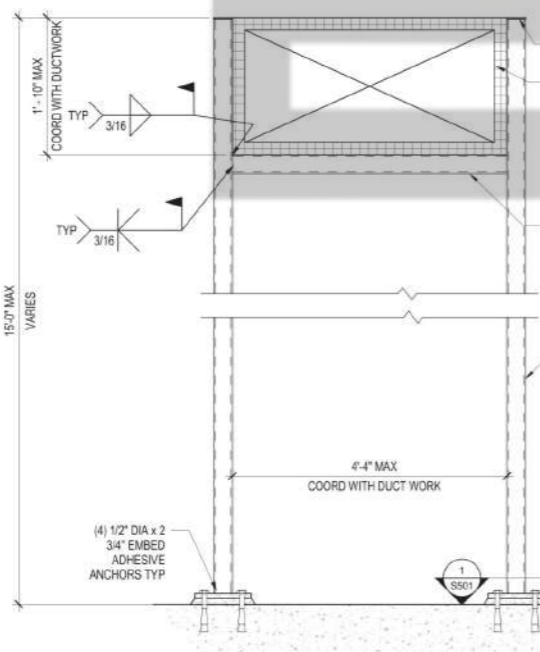
NOTE: QTY OF FASTENERS TO BE BASED ON THE BEAM SIZE PER TABLE THIS DETAIL & STEEL NOTES



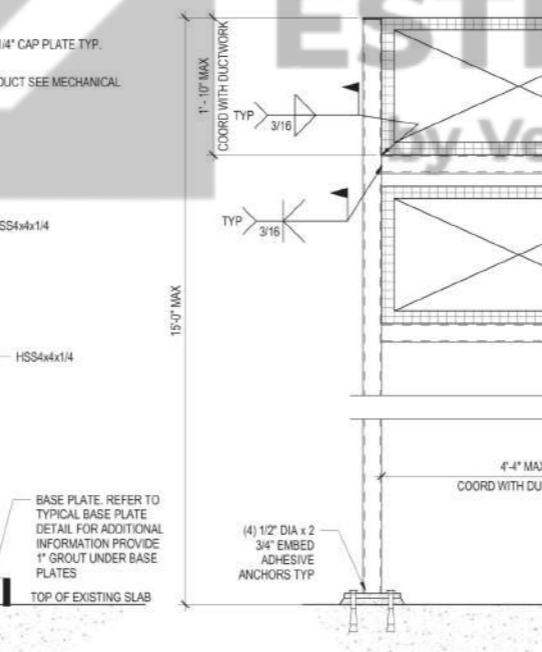
7 BEAM TO BEAM CONNECTION
S501 3/4" = 1'-0"



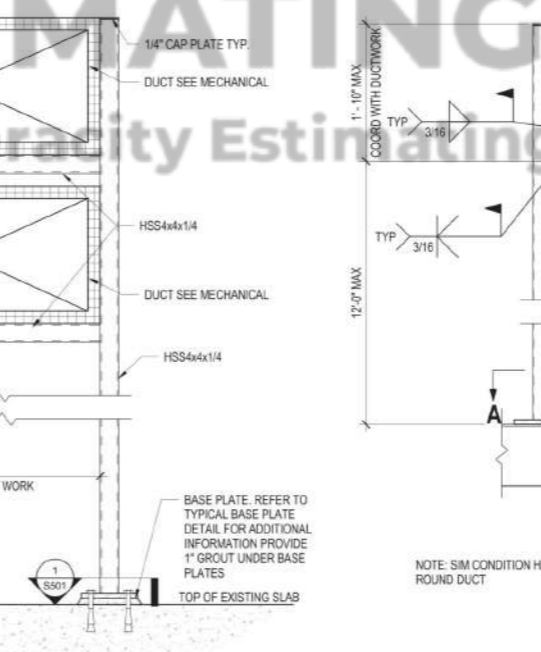
8 ENLARGED PLAN AT DUCT SUPPORT
S501 3/4" = 1'-0"



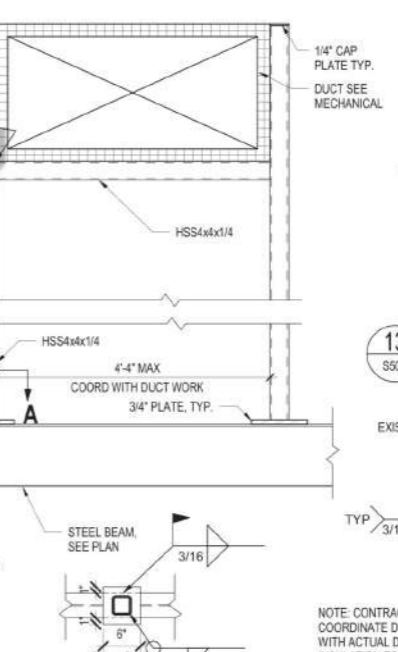
9 SECTION AT DUCT SUPPORT
S501 1/2" = 1'-0"



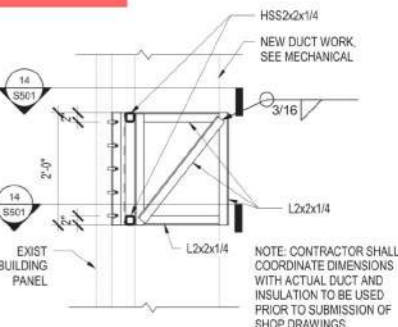
10 SECTION AT DUCT SUPPORT
S501 1" = 1'-0"



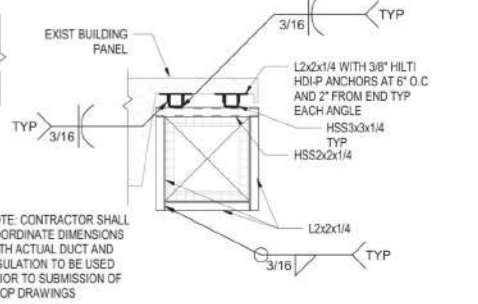
11 SECTION AT DUCT SUPPORT
S501 1" = 1'-0"



12 SECTION AT DUCT SUPPORT
S501 1" = 1'-0"



13 DUCT SUPPORT FRAMING SECTION
S501 3/4" = 1'-0"



14 ENLARGED PLAN AT DUCT SUPPORT
S501 3/4" = 1'-0"

Revisions: Date:	CONSULTANT 	ARCHITECT/ENGINEER OF RECORD AKEA Design, Inc. 3603 NW 98th Street, Suite B Gainesville, FL 32606 Phone: (352) 474-6124 Fax: (352) 553-4437 COA: FL #29758 AKEA Design Project #AD174-19	ENGINEER OF RECORD FL P.E. NO. SCOTT L. WELAND, PE 51146 	Office of Construction and Facilities Management 	Drawing Title STEEL DETAILS Approved:	Phase FINAL DESIGN SUBMITTAL APPROVED FOR CONSTRUCTION	Project Title RENOVATE 3D FOR CARDIOLOGY SERVICE	Project Number 573-CS1-122 Building Number 1 Drawing Number S501 8 OF 114
	Location GAINESVILLE, FLORIDA Issue Date SEPTEMBER 12, 2024 Checked SLM Drawn DCA							